



WORKWEAR OUTFITTERS™



FOOTWEAR CATALOG



KODIAK®

Kodiak is the pioneering Canadian bootmaker that champions the ability of those workers – driven by accomplishment – to change the world one step at a time.



TERRA®

Safety footwear designed for work and engineered for comfort. Premium protection, innovative craftsmanship, and a commitment to on-the-job safety is the Terra promise.

TABLE OF CONTENTS

KODIAK®	4	TERRA®	12
Crusade.....	6	Technology.....	13
Journey	6	Harrier	14
Ramble.....	7	Findlay	15
Trailsport LKT1.....	7	Sentry	15
Trailsport MKT1.....	8	Murphy	16
McKinney Boot	8	Venom Mid.....	17
McKinney Chelsea	9	Spider	17
Women’s Journey.....	9	Venom Low	18
Women’s Bralorne.....	10	Albany	18
Women’s Bralorne Chelsea	10	Women’s Spider.....	19
Technology Legend.....	11	Paladin.....	19
		Narvik.....	20
		Crossbow.....	20
		Technology Legend.....	21

Athletic / Low



RAMBLE
K4NKDB



TRAILSPORT LKT1
K4NKYB



MEN'S SPIDER
R8115B



SPIDER
R6007B



VENOM LOW
R8185B



ALBANY
R835BK

Mid



TRAILSPORT MKT1
K4NLIB



VENOM MID
R8285B

5 Inch & 6 Inch



CRUSADE
K4NKAD



CRUSADE
K4NKBK



MEN'S JOURNEY
K4NKED



JOURNEY
K4NKFD



BRALORNE
K4TEBN



MCKINNEY
K4TFBN



FINDLAY
R5205B



MURPHY
R4NRBK



MURPHY
R4NRBN



SENTRY
R4NWBN



MURPHY
R4NSBK



MURPHY
R4NSBN

8 Inch & 9 Inch



PALADIN
R2988B



9" CROSSBOW
R5605B

Pull On



BRALORNE CHELSEA
K4TDBK



MCKINNEY CHELSEA
K4TCBK



MCKINNEY CHELSEA
K4TCBN



HARRIER
R0001D



NARVIK
R3001B

PRODUCT REFERENCE CHART



KODIAK[®]

CANADA'S BOOT — SINCE 1910

WE ARE CANADA'S BOOT MAKER. IT'S BEEN THIS WAY SINCE 1910.

DEEPLY INGRAINED IN OUR APPROACH IS THE KNOWLEDGE THAT WHERE WE PUT EFFORT, WE FIND PRIDE. SWEAT, HARD WORK, GOOD PLANNING, SMART THINKING, DETERMINATION TO OVERCOME—WE CELEBRATE THESE MOMENTS OF PROGRESS. THEY CAN BE SIMPLE EVERYDAY MOMENTS—OR STEPS TOWARD COLLECTIVE ACCOMPLISHMENTS. IN THIS SPIRIT, WE MAKE BOOTS FOR THE MEN AND WOMEN WHO PUSH FORTH. WHO BEAT A PATH TO THEIR WORKSHOPS, WORKSITES AND FACTORIES EVERY DAY—NO MATTER WHAT. THE ONES WHO KEEP GOING BECAUSE THE DESIRE TO SEE WHAT'S DOWN THE PATH OR AROUND THE CORNER PULLS THEM AHEAD. THOSE WHO DIG IN, REACH OUT AND FIND A WAY TO MOVE FORWARD. BECAUSE PROGRESS MATTERS MORE THAN ACHIEVEMENT. AND PROGRESS ONLY HAPPENS WHEN WE'RE IN IT TOGETHER.



HIKE
&
TRAIL

THE LEGENDARY DURABILITY OF A KODIAK WORK BOOT MEETS THE AGILITY OF A HIKER.
OUR HIKE & TRAIL COLLECTION WAS BUILT TO WORK AS LONG AND AS HARD AS YOU DO—
NO MATTER HOW TOUGH THE TASK.

CRUSADE



KD0A4NKADWX / K4NKAD BROWN
SIZE 7-11, 12, 13, 14 M/W



KD0A4NKABLK / K4NKBK BLACK
SIZE 7-11, 12, 13, 14 M/W

- Full-grain waterproof leather upper with waterproof membrane construction
- Kodiak® SOS Smell Out Science® odor control technology
- Abrasion-resistant toe guard offers added durability
- Full leather bellows tongue
- 2 sets of laces
- Removable, comfort trainer perforated EVA insole
- Slip and oil-resistant rubber outsole with EVA midsole offers maximum comfort
- ASTM approved, composite toe cap, Electric Hazard protection



JOURNEY



KD0A4NKEDWX / K4NKED BROWN
SIZE 7-11, 12, 13, 14 M/W

- Full-grain waterproof leather upper with waterproof membrane construction
- Full bellows nylon padded tongue
- Molded TPU heel guard and rubber toe guard offer added durability
- Removable, shock-absorbing polyurethane insole
- Slip and oil-resistant rubber outsole with EVA midsole offers maximum comfort
- ROCKFIBRE® METAL FREE technology
- ASTM approved, composite toe cap, Electric Hazard protection



RAMBLE



KD0A4NKDBLK / K4NKDB BLACK
 SIZE 7-11, 12, 13, 14 M/W

- Highly abrasion-resistant textured nylon upper
- Kodiak® SOS Smell Out Science® odor control technology
- Supportive molded heel and eyestay strap
- Comfort padded bellows tongue
- Removable, comfort trainer perforated EVA insole
- Slip and oil-resistant rubber outsole with EVA midsole offers maximum comfort
- ROCKFIBRE® METAL FREE technology
- ASTM approved, composite toe cap, Static Dissipative +



TRAILSPO RT LKT1



KD0A4NKYBLK / K4NKYB BLACK
 SIZE 7-11, 12, 13, 14 M/W

- Features Kodiak® Quad Capsule™ comfort system
- TecTuff® performance leather upper with mesh trim
- ROCKFIBRE® METAL FREE Technology
- Kodiak® SOS Smell Out Science® odor control technology
- Comfortzone® polyurethane and Ortholite® footbed
- Integrated soft foam pods for shock absorption
- Oversized TPU shank for support and torsional stability
- Wraparound, oil and slip-resistant TPU outsole provides flex and protection
- ASTM Composite toe, Electrical Hazard protection



TRAILSPORT MKT1



KD0A4NL1BLG / K4NL1B BLACK/GRAY
 SIZE 7-11, 12, 13, 14 M/W

- Features Kodiak® Quad Capsule™ comfort system
- Combination leather and nylon waterproof mid-cut
- ROCKFIBRE® METAL FREE Technology
- Kodiak® SOS Smell Out Science® odor control technology
- Comfortzone® polyurethane and Ortholite® footbed
- Integrated soft foam pods for shock absorption
- Oversized TPU shank for support and torsional stability
- Wraparound, oil and slip-resistant TPU outsole provides flex and protection
- ASTM Composite toe, Electrical Hazard protection

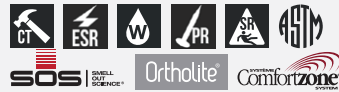


6" MCKINNEY BOOT



KD0A4TFUBRN / K4TFBN BROWN
 SIZE 7-11, 12, 13, 14, 15 W

- Classic Kodiak® 6" boot design with bellows leather tongue and padded collar with integrated pull tab
- Full grain waterproof leather with waterproof membrane construction
- Kodiak® SOS Smell Out Science® odour control technology
- Abrasion resistant lining
- Comfortzone® footbed with Ortholite®
- Oil & slip resisting, non-marking rubber outsole
- CSA and ASTM approved composite toe, composite plate, ESR
- 2 sets of laces



MCKINNEY CHELSEA

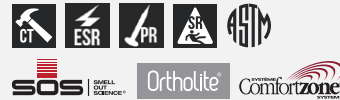


KD0A4TCYBLK / K4TCBK BLACK
 SIZE 7-11, 12, 13, 14, 15 W



KD0A4TCBRN / K4TCBN BROWN
 SIZE 7-11, 12, 13, 14, 15 W

- Classic Kodiak® double gore Chelsea boot with integrated pull tab
- Full grain waterproof leather
- Kodiak® SOS Smell Out Science® odour control technology
- Abrasion resistant lining
- Comfortzone® footbed with Ortholite®
- Oil & slip resisting, non-marking rubber outsole
- CSA and ASTM approved composite toe, composite plate, ESR



WOMEN'S

CREATED FOR CREATORS, KODIAK® WOMEN'S SAFETY BOOTS ARE PROTECTIVE, SUPPORTIVE AND UP FOR ANY JOB. COMFORT AND DURABILITY JOIN FORCES TO BRING YOU BOOTS BUILT TO GET IT DONE.

JOURNEY



KD0A4NKFDWX / K4NKFD BROWN
 SIZE 6-10, 11 M/W

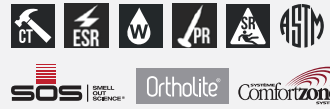
- Full-grain waterproof leather upper with waterproof membrane construction
- Full bellows nylon padded tongue
- Molded TPU heel guard and rubber toe guard offer added durability
- Removable, shock-absorbing polyurethane insole
- Slip and oil-resistant rubber outsole with EVA midsole offers maximum comfort
- ROCKFIBRE® METAL FREE technology
- ASTM approved, composite toe cap, Electric Hazard protection



6" BRALORNE BOOT



- Classic Kodiak® 6" boot with bellows leather padded tongue and collar
- Full grain waterproof leather with waterproof membrane construction
- Kodiak® SOS Smell Out Science® odour control technology
- Abrasion resistant lining
- Comfortzone® footbed with Ortholite®
- Oil & slip resisting, non-marking rubber outsole
- CSA and ASTM approved composite toe, composite plate, ESR
- 2 sets of laces



KD0A4TEWBRN / K4TEBN BROWN
 SIZE 6-10, 11 M

BRALORNE CHELSEA



- Classic Kodiak® double gore Chelsea boot with integrated pull tab
- Full grain waterproof leather
- Kodiak® SOS Smell Out Science® odour control technology
- Abrasion resistant lining
- Comfortzone® footbed with Ortholite®
- Oil & slip resisting, non-marking rubber outsole
- CSA and ASTM approved composite toe, composite plate, ESR



KD0A4TDFBLK / K4TDBK BLACK
 SIZE 5-10, 11 M

TECHNOLOGY LEGEND



**COMPOSITE
SAFETY TOE**



WATERPROOF



**STATIC
DISSIPATIVE**



**ELECTRIC SHOCK
RESISTANT**



**ELECTRICAL
HAZARD**



**METAL
FREE**



**STATIC
DISSIPATIVE +**



**PUNCTURE
RESISTANT**



**SLIP
RESISTANT**



**ASTM
TESTED**



METAL-FREE TECHNOLOGY

Kodiak® ROCKFIBRE® footwear is manufactured with a metal-free protective toe and puncture-resistant plate. Metal-free components are lighter than steel and provide better insulation against the cold.



KODIAK® SOS SMELL OUT SCIENCE®

- Innovative odor control technology
- Beneficial microbes break down odour causing bacteria

Ortholite®

ORTHOLITE®

OrthoLite® insole provides odor-fighting antimicrobial function, moisture management, and long term cushioning.



Ortholite®
the secret inside



**ORTHOLITE® FOAM LAYER PROVIDES LONG TERM
CUSHIONING AND MOISTURE MANAGEMENT**

**CONTOURED ARCH
PROVIDES SUPPORT**



**INVERTED POLYURETHANE
DIAMOND SHAPES ABSORB
SHOCK DURING HEEL STRIKE**

TERRA 

PREMIUM PROTECTION, COMFORT, AND PERFORMANCE

WE HOLD ALL TERRA® BOOTS TO A RIGOROUS AND EXACTING STANDARD.
TECHNICALLY ADVANCED, DESIGNED FOR OPTIMAL PERFORMANCE, WITHOUT
SACRIFICING PROTECTION AND COMFORT. THAT'S THE TERRA WAY.



TERRA®
FIRMA-FLEX®
 METAL FREE TECHNOLOGY

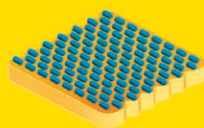


**OUR TRADEMARK
 METAL-FREE
 TECHNOLOGY**

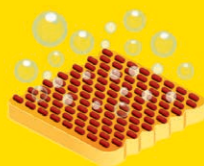
- Lightweight metal free technology, exclusive to TERRA
- Combines super-weaved, high tensile fabric and resilient polymer compounds
- Puncture resistant plate increases surface coverage, and remains flexible vs. traditional steel plates

**PREVENTS ODOUR
 BEFORE IT STARTS**

SAFE AND NATURAL, **CLEANFEET®** ODOUR CONTROL TREATMENT IS GUARANTEED FOR THE LIFE OF YOUR WORKBOOTS.



1 **CLEANFEET®** fabric with dormant enzymes.



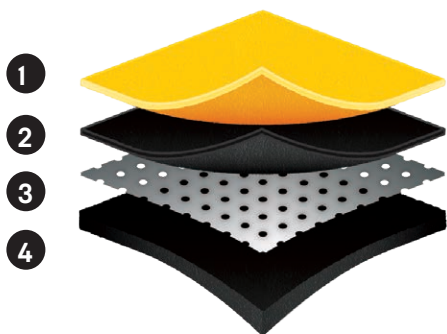
2 Upon contact with perspiration, enzymes become active.



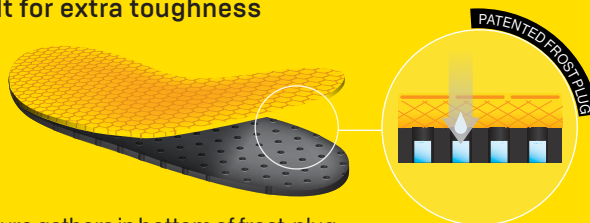
3 Enzymes neutralize odour and release harmless water vapor.

TERRASPHERE

EVEN IN THE MOST EXTREME ENVIRONMENTS, YOUR FEET CAN RELY ON TERRASPHERE: AN INTENSIVELY ENGINEERED ECO-SYSTEM AT THE CORE OF YOUR WORKBOOT.



1. Aerospacer nylon layer with **CLEANFEET®** treatment
2. Premium moisture wicking Wool/Felt blend is breathable & locks in heat
3. Reflective mylar layer insulates
4. Extra thick (12.3mm), needle pulled felt for extra toughness



Moisture gathers in bottom of frost-plug. Frozen moisture can easily be removed from boot.



8 INCH SAFETY BOOTS

Durable, tough, and built for protection, the TERRA® line of 8" work boots gets the job done no matter how rugged the terrain. Armed with features such as GORE-TEX® waterproofing, genuine leather uppers, Thinsulate™ insulation, and reflective 3M™ Scotchlite™ piping, these boots are designed for optimal safety and comfort.



HARRIER



SIZING - 7, 8-11, 12, 13, 14

- Full grain waterproof sealed-seam leather upper
- Oversized pull loops and contoured throat opening
- Moisture wicking and abrasion resistant Cambrelle® lining
- Waterproof bootie construction, with **CLEANFEET®** odour control treatment
- High traction, anti-F.O.D. slip-resistant rubber outsole
- Direct injected, shock absorbing PU midsole and PU toe bumper
- Premium dual density PU **FOOTBED®**
- ASTM & CSA Grade 1 composite toe, composite plate, EH
- **TERRA FIRMA-FLEX®** metal free



■ **TR110001DWX / R0001D** BROWN CT / CP / EH

6 INCH SAFETY BOOTS

Our 6" work boots are built using industry leading technologies and materials including GORE-TEX® waterproofing, genuine leather uppers, Thinsulate™ insulation, and reflective 3M Scotchlite™ piping. These boots are built to be as protective and as strong as our 8" collection, but with an increased focus on flexibility and range of movement.

FINDLAY



SIZING - 7, 8-11, 12, 13, 14

- Full-grain waterproof nubuck leather upper
- Moisture wicking and abrasion resistant aero-lining
- Waterproof bootie construction, with **CLEANFEET®** odour control treatment
- Reflective **3M™ Scotchlite™** quarter band
- High-traction, slip-resistant rubber outsole
- Shock absorbing PU midsole and PU toe bumper
- Premium single-density PU **FOOTBED®**
- CSA Grade 1 composite toe, composite plate, static dissipative
- **TERRA FIRMA-FLEX®** metal free



■ **TR305205BLK / R5205B** BLACK CT / CP / SD

SENTRY 2020-INT MET



SIZING - 7-12, 13, 14, 15

- Full-grain waterproof leather upper
- Four-row stitched "combat" upper pattern with comfort bellows tongue
- Abrasion-resistant **TECTUFF™** leather back strap
- Moisture-wicking lining with **CLEANFEET®** odour-control treatment
- **XRD®** Internal MET guard
- All-season, slip-resistant, heavy-duty TPU outsole
- Direct-injected, lightweight and shock-absorbing PU midsole, with PU
- Toe bumper
- Premium comfort PU **FOOTBED®** insole
- CSA Grade 1 composite **KRYPTOE®** composite plate, E.S.R.
- 966g (Men's size 9)



■ **TR0A4NRWBRN / R4NWBN** BROWN CP / EH / M / PR / SR



MURPHY-SOFT TOE



MEN'S SIZING - 3-12, 13, 14 (MEDIUM AND WIDE WIDTHS)

- Full-grain waterproof leather upper
- Pull-on twin gore construction
- Moisture-wicking and abrasion-resistant lining
- **CLEANFEET®** odour-control treatment
- Direct-injected PU midsole
- Slip, heat and acid-resistant TPU outsole
- Premium comfort dual-density PU **FOOTBED®** insole
- 636g (Men's Size 9)

■ **TROA4NSEBLK / R4NSBK** BLACK SF / ESR / EH / PR / MF / SR

■ **TROA4NSEBRN / R4NSBN** BROWN SF / ESR / EH / PR / MF / SR



MURPHY



SIZING - 3-11, 12, 13, 14

- Full-grain waterproof leather upper
- Pull-on twin gore construction
- Moisture-wicking and abrasion-resistant lining
- **CLEANFEET®** odour-control treatment
- Direct-injected PU midsole
- Slip, heat and acid-resistant TPU outsole
- Premium comfort dual-density PU **FOOTBED®** insole
- CSA Grade 1 composite toe, composite plate, ESR
- **TERRA FIRMA-FLEX®** 100% Metal Free
- 730g (Men's Size 9)

■ **TROA4NRFBLK / R4NRBK** BLACK CT / CP / ESR / EH / PR / MF / SR

■ **TROA4NRFBRN / R4NRBN** BROWN CT / CP / ESR / EH / PR / MF / SR



VENOM MID



SIZING - 6, 7, 8-11, 12, 13

- Water-resistant suede and nubuck leather upper
- Moisture-wicking and abrasion-resistant lining
- **CLEANFEET®** odour control treatment
- Reflective **3M™ Scotchlite™** heel band
- Low profile direct injected PU midsole and outsole with supportive sidewall chassis.
- Premium single-density PU **FOOTBED®**
- CSA Grade 1 composite toe, composite plate, static dissipative
- **TERRA FIRMA-FLEX®** metal free



■ **TR608285BLK / R8285B** BLACK CT / CP / SD

ATHLETICS

In the active, everyday work environment, we recognize how important it is to be able to adapt to ever-changing surroundings. That's why our **TERRA®** line of Athletic Safety Shoes is engineered for those who are constantly in motion – on and off the clock. Flexible and comfortable, our athletic-styled safety footwear will keep up with you long after the work day ends.

SPIDER



SIZING - 5, 6, 7, 8-11, 12, 13

- Water-resistant suede and nubuck leather upper
- Moisture wicking and abrasion resistant lining
- **CLEANFEET®** odour control treatment
- Reflective toe and heel accents
- Low profile direct injected PU midsole and outsole with supportive sidewall chassis.
- Premium single-density PU **FOOTBED®**
- CSA Grade 1 composite toe, composite plate, EH
- **TERRA FIRMA-FLEX®** metal free



■ **TR608115BLK / R8115B** BLACK CT / CP / EH

VENOM LOW



SIZING - 6, 7, 8-11, 12, 13

- Water-resistant suede and nubuck leather upper
- Moisture-wicking and abrasion-resistant lining
- **CLEANFEET®** odour control treatment
- Reflective toe and heel accents
- Low profile direct injected PU midsole and outsole with supportive sidewall chassis.
- Premium single-density PU **FOOTBED®**
- CSA Grade 1 composite toe, composite plate, static dissipative
- **TERRA FIRMA-FLEX®** metal free

■ **TR608185BLK / R8185B** BLACK CT / CP / SD



ALBANY



SIZING - 7, 8-11, 12, 13

- Full-grain waterproof sealed-seam leather upper
- Moisture-wicking and abrasion-resistant lining
- **CLEANFEET®** odour-control treatment
- Direct-injected, all-purpose industrial PU outsole
- Direct-injected, shock-absorbing PU midsole
- Premium dual-density PU **FOOTBED®** insole
- CSA Grade 1 composite toe, composite plate, E.S.R.
- **TERRA FIRMA-FLEX®** - 100% Metal Free
- 670g (Men's size 9)

■ **TR835235BLK / R835BK** BLACK CT / CP / EH / PR / SR / MF



WOMEN'S SPIDER



SIZING - 6, 7-10

- Water-resistant suede and nubuck leather upper
- Moisture wicking and abrasion resistant lining
- **CLEANFEET®** odour control treatment
- Low profile direct injected PU midsole and outsole with supportive sidewall chassis.
- Premium single-density PU **FOOTBED®**
- CSA Grade 1 composite toe, composite plate, EH
- **TERRA FIRMA-FLEX®** metal free



■ **TR106007BLK / R6007B** BLACK/PURPLE CT / CP / EH

METGUARD

The **TERRA®** line of internal metguard safety shoes and boots features superior strength and top-of-the-foot safety. Innovatively designed with comfort and flexibility in mind, our Metguard – with **XRD™** impact dissipating technology - allow you to perform your best while on your feet, in even the most heavy-duty, high-risk environments.

PALADIN



SIZING - 4, 5, 6, 7, 8-11, 12, 13, 14

- Full-grain waterproof sealed-seam leather upper
- Exclusive pull-on collar ports
- Moisture-wicking and abrasion-resistant aero-lining
- 200 gm **Thinsulate™** insulation and **CLEANFEET®** odour control treatment
- **XRD®** internal metatarsal protection
- High traction, anti-F.O.D. slip-resistant rubber outsole
- Direct injected, shock absorbing PU midsole and PU toe bumper
- Premium dual-density PU **FOOTBED®**
- CSA Grade 1 composite toe, composite plate, EH, Metguard
- **TERRA FIRMA-FLEX®** metal free



■ **TR02988BBLK / R2988B** BLACK CT / CP / EH / M



NARVIK



SIZING - 8-16 (FULL SIZES ONLY)

- Direct injected, industrial grade, thermal PU upper
- Moisture-wicking neo-spacer lining
- **XRD**® internal metatarsal protection
- Lightweight injected PU midsole
- Heavy-duty all-terrain rubber outsole – heat, slip, oil and acid resistant
- Premium single-density PU **FOOTBED**®
- CSA Grade 1 composite toe, composite plate, EH, Metguard
- **TERRA FIRMA-FLEX**® metal free
- Comfort Rated **-30°C/-22°F**



■ TR113001BLK / R3001B BLACK CT / CP / EH / M

WINTER/FREEZER

You won't get caught in the cold with Terra's line of Winter/Freezer boots – that's why they're Comfort-Rated to **-60° C/-76° F**. From the removable **TERRASPHERE™** 4-layer lining system to the direct inject cold formulated PU shell bottom and a high-traction thermal-tested rubber outsole, your feet will be warm inside our boots – regardless of the temperatures outside of them.



CROSSBOW



SIZING - 4-16 (FULL SIZES ONLY)

- Full-grain waterproof sealed-seam leather upper with integrated pull tab
- Removable **TERRASPHERE™** 4-layer lining system
- **CLEANFEET**® odour control treatment
- Reflective **3M™ Scotchlite™** quarter band
- High-traction thermal-tested rubber outsole with diamond cleat design
- Direct injected cold formulated PU shell bottom with doffing assist heel prong
- Two layer mesh and EVA moisture capture frost plug insole
- CSA Grade 1 composite toe, composite plate, EH
- **TERRA FIRMA-FLEX**® metal free
- Comfort Rated **-60°C/-76°F**



■ TR915605BLK / R5605B BLACK CT / CP / EH

GLOSSARY

AT	Aluminum Toe	PR	Puncture Resistant	SD/SD+	Static Dissipative/ Super-Static Dissipative
CT	Composite Toe	SR	Slip Resistant	M	Metatarsal Protection
ST	Steel Toe	CP	Composite Plate		
SF	Soft Toe	SP	Steel Plate		
EH	Electrical Shock Resistance	MF	Metal Free		



CSA GREEN TRIANGLE

The CSA Green Triangle indicates sole puncture protection with a Grade 1 Protective toe to withstand impacts up to 125 joules. Sole puncture protection is designed to withstand a force of not less than 1200 Newtons (122 kilos / 270 pounds).



CSA BLUE RECTANGLE

The CSA Blue Rectangle indicates Grade 1 protective toe without sole puncture protection. Grade 1 toe withstands impacts up to 125 joules.



CSA WHITE RECTANGLE

The CSA White rectangle with orange Greek letter omega - Ω indicates soles that provide resistance to electric shock. Such certified footwear contains a sole and heel design assembly that, at the point of manufacturing, has electrical insulating properties to withstand 18,000 Volts and a leakage current not exceeding 1mA for 60 seconds.



CSA YELLOW RECTANGLE

The CSA Yellow rectangle with a green "SD" and grounding symbol indicates soles are static-dissipative. The outer soles are made from an antistatic compound, capable of dissipating an electrostatic charge in a controlled manner. The test criteria are 10⁴ to 10⁸ Ohms. Note that SD footwear without toe protection will not have sole protection certified by CSA.



CSA SD+

The CSA Yellow rectangle with a black "SD+" indicates soles are super static-dissipative. This protection feature is similar to SD, except the test criteria are 10⁴ to 3.5 x 10⁷ Ohms.



METGUARD IMPACT TEST

A new standard from CSA - only Metguards bearing the "M" emblem are CSA approved. The mass (22.7kg) is dropped on the centered boot, impacting the met guard.



NANO-TOE™ COMPOSITE TECHNOLOGY

20% lighter than previous generations, Nano-toe™ technology incorporates specially woven fibres with highly impact resistant resins. The result is a globally certified, light weight, low profile composite toe.



CAMBRELLE™

Cambrelle® fabric lining provides superior moisture management, comfort technology and abrasion resistance. These elements are fundamental for all day performance. www.cambrelle.com



GORE-TEX® WATERPROOF BREATHABLE MEMBRANE

GORE-TEX® is the global leader in premium, breathable waterproofing solutions. Waterproof membranes are used to keep your feet dry. With billions of microscopic pores, membranes allow perspiration from your feet to escape, while blocking the entrance of moisture from the outside.



3M™ SCOTCHLITE™

3M is a pioneer in developing the science behind retro-reflection and has been advancing the technology for over 70 years. 3M™ Scotchlite™ brand is one of the most trusted names in reflective materials and fabrics.



3M™ THINSULATE™

3M™ Thinsulate™ Insulation offers almost one-and-one-half times the warmth of down, and up to twice the warmth of other high-loft insulation materials. Unique microfibers work by trapping air between you and the outside. The more air a material traps in a given space, the better it helps regulate the inside temperature of the footwear.



XRD® INTERNAL METGUARD

New breakthrough flexible materials with XRD® technology. Designed to stay flexible in motion, but turn into an ultra-dense protective barrier upon impact.



DUPONT™ KEVLAR™

DuPont™ Kevlar® aramid fiber allows people to Dare Bigger. It's used to make a variety of clothing, accessories, and equipment safe and cut resistant. It's lightweight, durable and extraordinarily strong.



KRYPTOE™

20% lighter than previous generations, Kryptoe™ technology incorporates specially woven fibers with highly impact-resistant resins. The result is a globally certified, lightweight, low-profile composite toe.

WATERPROOF MEMBRANE

Full-booty construction and welded insulation offer complete around-the-foot waterproofing protection.

PREMIUM TRIPLE-DENSITY FOOTBED™

Dual-density polyurethane, combined with a top layer of cushioned foam provide the long lasting comfort needed on the job.

CANADA

415 Thompson Drive, Cambridge
Ontario, Canada N1T 2K7
Tel: (519) 620-4000
Toll Free: 1(800) 263-5903

US

200 Domain Drive
Stratham, NH 03885
Toll Free: 1(833) 795-3420

TERRAFOOTWEAR.COM

Terra®, a brand of Workwear Outfitters, LLC. TERRA, CLEANFEET, the CLEANFEET LOGO, FOOTBED, TERRA FIRMA-FLEX, TERRASPHERE, JETSTRIDE, the JETSTRIDE logo, KRYPTOE, the KRYPTOE logo, TERRA LITES, the WORKMAN DESIGN are trademarks of W-D Apparel Company LLC. All other trademarks or logos are property of their respective owners.



**WORKWEAR
OUTFITTERS™**

©2022 Workwear Outfitters, LLC. Kodiak® and Terra®, brands of Workwear Outfitters, LLC

22-1301